



**India Meteorological Department
(Ministry of Earth Sciences)**

BULLETIN NO. 1 (BOB/08/2022)

TIME OF ISSUE: 0845 HOURS IST

DATED: 20.11.2022

FROM: INDIA METEOROLOGICAL DEPARTMENT (FAX NO. 24643965/24699216/24623220)

TO: CONTROL ROOM, NDM, MINISTRY OF HOME AFFAIRS (FAX.NO. 23093750)

CONTROL ROOM NDMA (FAX.NO. 26701729)

CABINET SECRETARIAT (FAX.NO.23012284, 23018638)

PS TO HON'BLE MINISTER FOR S & T AND EARTH SCIENCES (FAX NO.23316745)

SECRETARY, MOES (FAX NO. 24629777)

H.Q. (INTEGRATED DEFENCE STAFF AND CDS) (FAX NO. 23005137/23005147)

DIRECTOR GENERAL, DOORDARSHAN (23385843)

DIRECTOR GENERAL, AIR (23421105, 23421219)

PIB MOES (FAX NO. 23389042)

UNI (FAX NO. 23355841)

D.G. NATIONAL DISASTER RESPONSE FORCE (NDRF) (FAX NO. 26105912, 2436 3260)

DIRECTOR, PUNCTUALITY, INDIAN RAILWAYS (FAX NO. 23388503)

CHIEF SECRETARY, ANDAMAN & NICOBAR ISLANDS (FAX NO. 03192- 232656)

CHIEF SECRETARY, GOVT. OF ANDHRA PRADESH (FAX NO. 0863-2441029, 08645-246600)

CHIEF SECRETARY, GOVT. OF TAMIL NADU (FAX NO. 044-25672304)

CHIEF SECRETARY, GOVT. OF PUDUCHERRY (FAX NO. 0413-2337575, 2334145)

Sub: Depression over southwest and adjoining southeast Bay of Bengal

Yesterday's Well Marked Low Pressure Area over central parts of south Bay of Bengal moved west-northwestward, concentrated into a depression and lay centred at 0530 hours IST of today, the 20th November, 2022 over southwest and adjoining southeast Bay of Bengal, near latitude 10.0° N and longitude 85.5° E, about 600 km east of Jaffna (Sri Lanka), 630 km east-southeast of Karaikal and 670 km east-southeast of Chennai.

It is very likely to maintain its intensity of depression and move slowly west-northwestwards towards Tamilnadu-Puducherry and south Andhra Pradesh coasts during next 48 hours.

Warnings:

(i) Rainfall (warning graphics enclosed)

- ❖ Light to moderate rainfall is likely to commence from 20th November evening over coastal Andhra Pradesh and adjoining north Tamil Nadu & Rayalaseema. The intensity of rainfall is likely to increase with light to moderate rainfall at many places and isolated heavy rainfall is likely over North Tamilnadu-Puducherry and south coastal Andhra Pradesh & Rayalaseema on 21st and 22nd November and light to moderate rainfall at a few places over North coastal Andhra Pradesh during the same period.

(ii) Wind warning:

- ❖ **Squally wind speed reaching 45-55 kmph gusting to 65 kmph is likely to prevail over Southwest and adjoining Westcentral Bay of Bengal and along & off Andhra Pradesh, Tamil Nadu, Puducherry and Sri Lanka coasts during 20th – 22nd November.**
- ❖ **Squally weather with wind speed reaching 40-45 kmph gusting to 55 kmph is likely to prevail over Gulf of Mannar on 21st & 22nd November.**

(iii) Sea condition

- ❖ **Sea condition will be rough to very rough over Southwest and adjoining Westcentral Bay of Bengal and along & off Andhra Pradesh, Tamil Nadu, Puducherry, Sri Lanka coasts during 20th – 22nd November.**
- ❖ **Sea condition will be rough over Gulf of Mannar on 21st & 22nd November.**

(iv) Fishermen Warning

Fishermen are advised not to venture into:

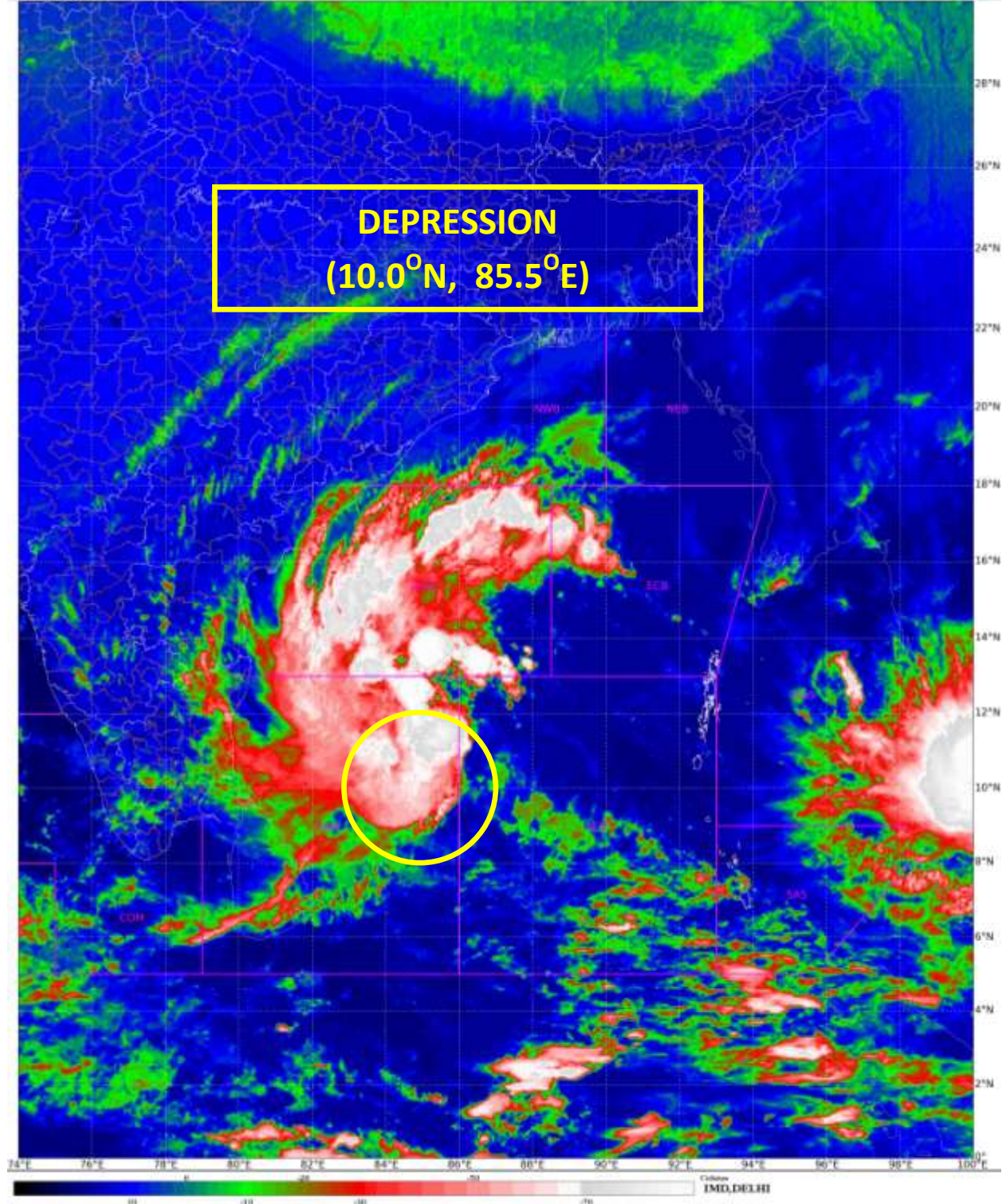
- ❖ Southwest and adjoining Westcentral Bay of Bengal and along & off Andhra Pradesh, Tamil Nadu, Puducherry, Sri Lanka coasts during 20th – 22nd November
- ❖ Gulf of Mannar on 21st & 22nd November.

The system is under continuous surveillance and the next message will be issued at 1130 hours IST of today, the 20th November, 2022.

**(Ananda Kumar Das)
Scientist E, Cyclone Warning, New Delhi**

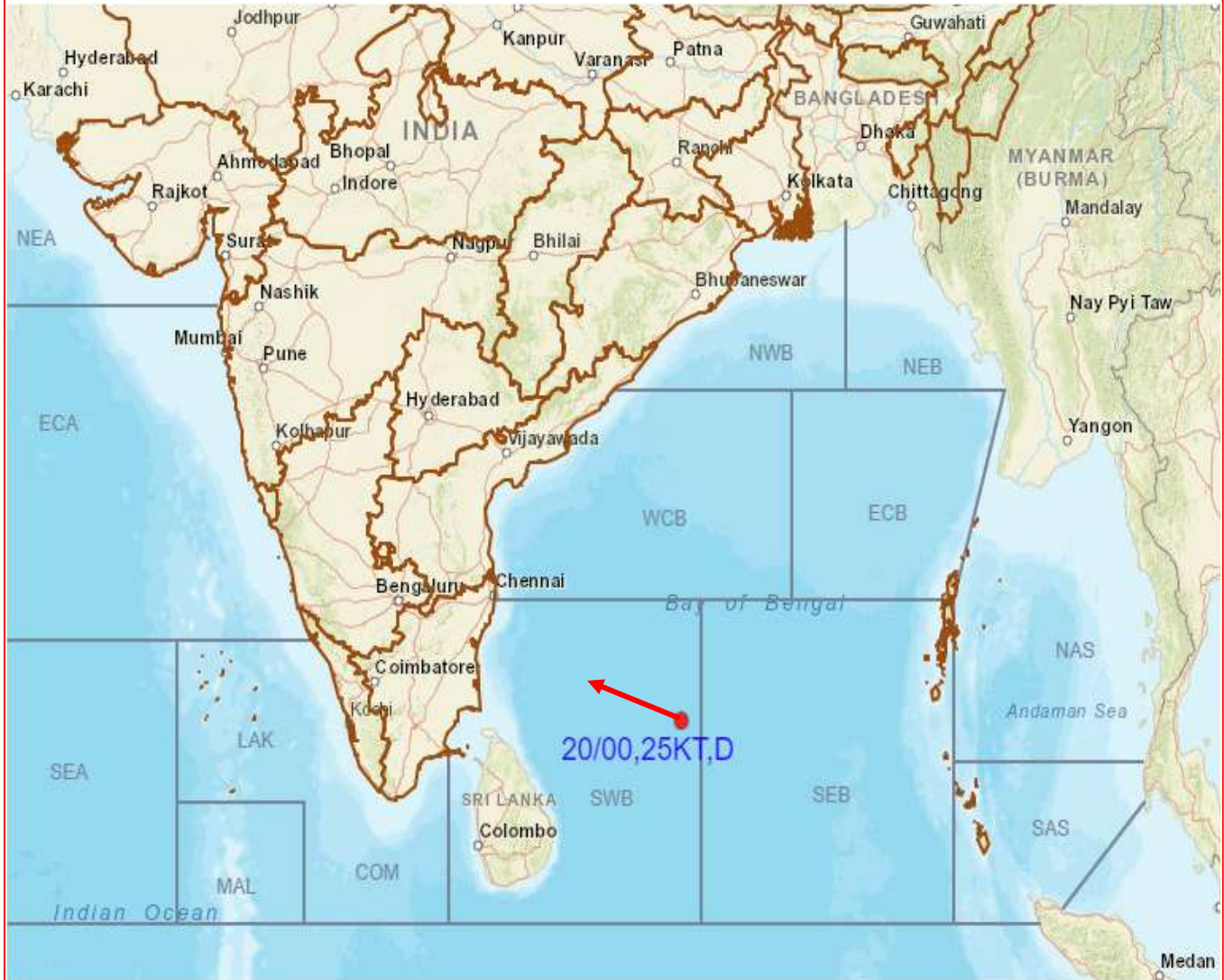
Copy to: ACWC Kolkata/ ACWC Chennai/ CWC Bhubaneswar/CWCVisakhapatnam/MO Port Blair

LEGEND: Heavy Rainfall: 64.5 to 115.5mm, **Very Heavy Rainfall:** 115.6 to 204.4mm **Most Places:** more than 76% of total stations, **Isolated Places:** Less than 25% of total





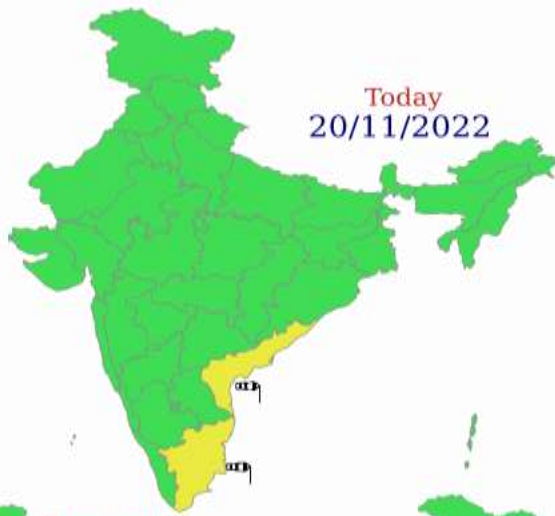
OBSERVED AND FORECAST TRACK OF DEPRESSION OVER SOUTHWEST AND ADJOINING SOUTHEAST BAY OF BENGAL BASED ON 0000 UTC OF 20TH NOVEMBER, 2022



DATE/TIME IN UTC
IST=UTC + 0530
L: LOW PRESSURE AREA
WML: WELL MARKED LOW PRESSURE AREA
D: DEPRESSION (17-27 KT)
DD: DEEP DEPRESSION (28-33 KT)
CS: CYCLONIC STORM (34-47 KT)
SCS: SEVERE CYCLONIC STORM (48-63KT)
VSCS: VERY SEVERE CYCLONIC STORM (64-89 KT)
ESCS: EXTREMELY SEVERE CYCLONIC STORM (90-119 KT)
SuCS: SUPER CYCLONIC STORM (≥ 120 KT)

-  LESS THAN 34 KT
-  34-47 KT
-  ≥ 48 KT
-  OBSERVED TRACK
-  FORECAST TRACK
-  CONE OF UNCERTAINTY

Today
20/11/2022



WARNING



Tomorrow
21/11/2022



22/11/2022



23/11/2022



24/11/2022



Heavy Rain



Heavy Snow



Thunderstorm



Dust Storm



Strong Winds



Visibility



Cyclone



Squall/ Hail



Frost



Cold Wave



Heat Wave



Sea State